



ESG4 Conference @ UCSB

4th IASPEI/IAEE International Symposium:
Effects of Surface Geology on Strong Ground Motion

Welcome





ESG4 Conference @ UCSB

4th IASPEI/IAEE International Symposium:
Effects of Surface Geology on Strong Ground Motion

OUR SPONSORS





ESG4 Conference @ UCSB

4th IASPEI/IAEE International Symposium:
Effects of Surface Geology on Strong Ground Motion

Ralph J. Archuleta
Conference Chairman
Department of Earth Science
University of California, Santa Barbara

Local Planning Committee
Jamison H. Steidl
Earth Research Institute
University of California, Santa Barbara

Sandra W. H. Seale
Earth Research Institute
University of California, Santa Barbara

Hiroshi Kawase
Co-chairman of JWG on ESG+SMP
Disaster Prevention Research Institute,
Kyoto University

Jacobo Bielak
Co-chairman of JWG on ESG+SMP
Dept. of Civil & Environmental Engineering
Carnegie Mellon University



IASPE / IAE
 4TH GROUND MOTION
 2011
 UC SANTA BARBARA



Conference Facilities

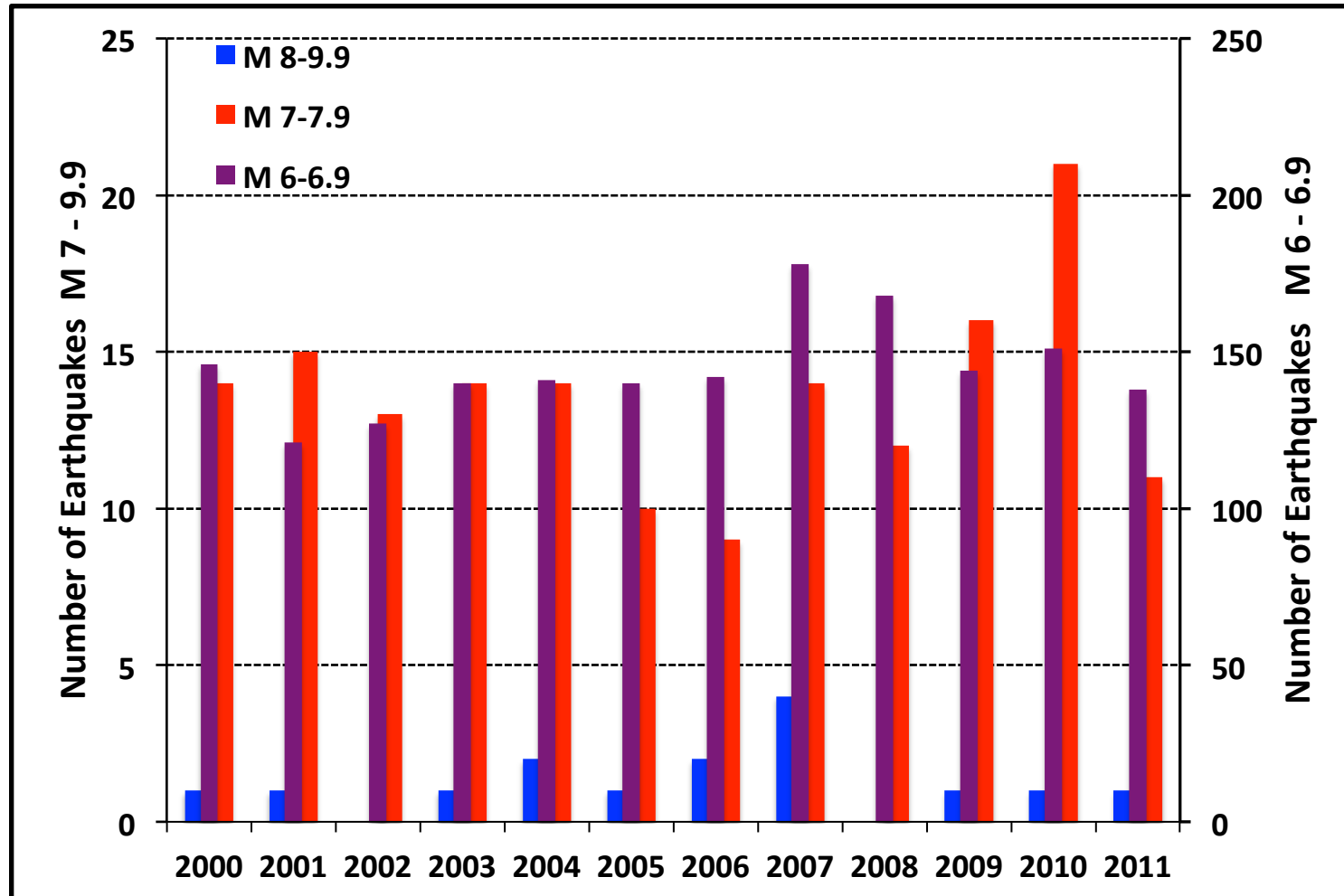
1. **Corwin Pavilion**
 - Registration, Sessions, Posters
2. **University Center Harbor Room** (Lower Level)
 - NEES Pre-Conference Workshop
3. **Manzanita Village Residence Hall**
 - ESG4 On-Campus Accommodation
4. **Manzanita Village Bus Loop**
 - 8/27 Post Conference Excursions Transportation Loading
5. **Lagoon Plaza**
 - 8/23 Opening Dinner, 8/24 Catered Lunch
 - 8/26 Afternoon Reception, Posters, Refreshment Breaks
6. **Goleta Beach**
 - 8/25 Catered BBQ Dinner
7. **Carrillo Dining Commons**
8. **De La Guerra Dining Commons**
9. **Lot 22 Parking**

- Accessible Parking
- Motorcycles
- Bus Stop
- Coastal Access
- Residence Halls
- Traffic Light
- Parking Meters (available to general public)
- Parking Dispensers
- Parking



ESG4 Conference @ UCSB

4th IASPEI/IAEE International Symposium:
Effects of Surface Geology on Strong Ground Motion

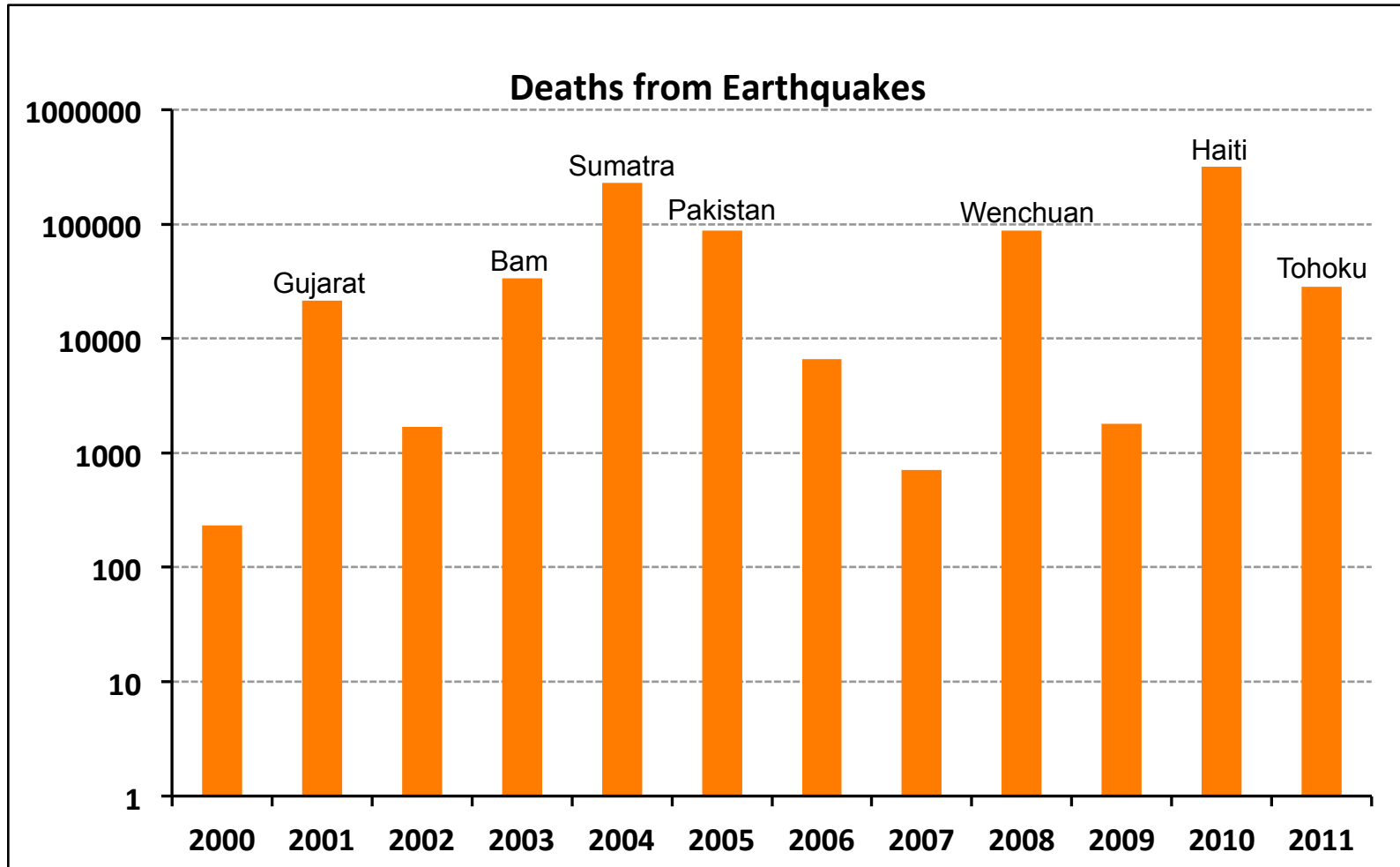


From USGS-National Earthquake Information Center—Aug. 18, 2011



ESG4 Conference @ UCSB

4th IASPEI/IAEE International Symposium:
Effects of Surface Geology on Strong Ground Motion



From USGS-National Earthquake Information Center—Aug. 18, 2011



ESG4 Conference @ UCSB

4th IASPEI/IAEE International Symposium:
Effects of Surface Geology on Strong Ground Motion

"An approximate answer to the right problem is worth a good deal more than an exact answer to an approximate problem."

-- John Tukey